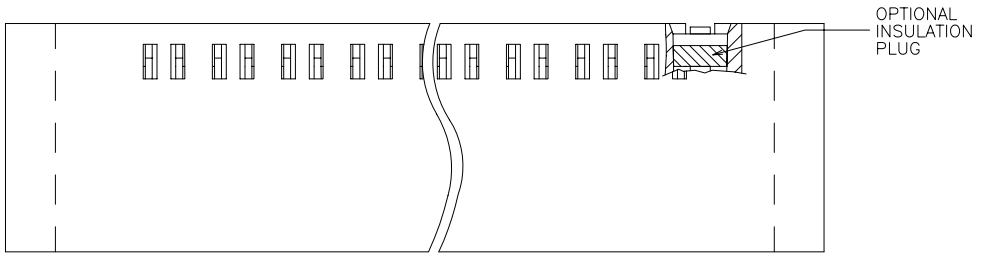
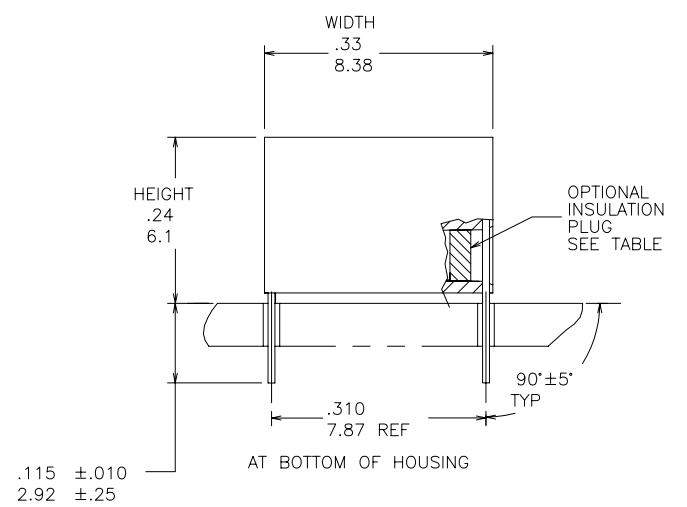
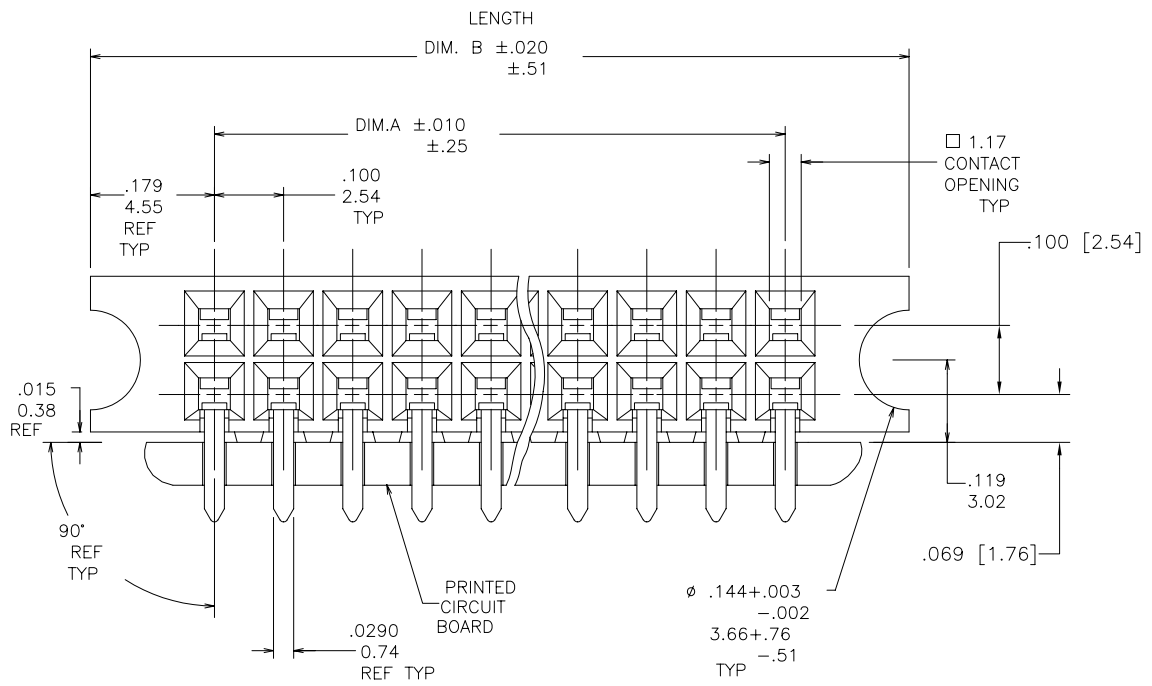


PRODUCT NO.  
SEE TABLE



OPTIONAL  
INSULATION  
PLUG



FCIconnect.com

Copyright FCI

|             |          |  |          |                     |            |                                       |   |                               |  |
|-------------|----------|--|----------|---------------------|------------|---------------------------------------|---|-------------------------------|--|
| mat'l. code |          | surface                                      |          | tolerance           |            | projection                            |   | product family                |  |
| -           |          | ISO 1302 <input checked="" type="checkbox"/> |          | ISO 406<br>ISO 1101 |            |                                       |   | CARD CONN                     |  |
| ltr         |          | ecn no                                       |          | date                |            | tolerances unless otherwise specified |   | title                         |  |
| H           | V61635   | MDF  | 11/21/96 | angles              | linear     | .xx±.01/.3                            |   | GUIDE PIN<br>CARD CONNECTOR   |  |
| J           | V61635   | MDF  | 11/21/96 |                     |            | .xxx ±.005/.13                        |   | INCH/MM                       |  |
| K           | V70999   | LSS  | 12/11/97 | 0°±2'               |            | .xxx ±.0020/.051                      |   | scale 4:1                     |  |
| L           | V02386   | AZ   | 10/05/00 | dr                  | L. SANDERS | 12/11/97                              |   | dwg no                        |  |
| M           | M05-0181 | MHT  | 8/22/05  | enfr                | H. SUNDY   | 12/11/97                              |   | sheet 1 of 6 size             |  |
| N           | M06-0117 | AEA  | 06/26/06 | chr                 | H. SUNDY   | 12/11/97                              |   | 67477 A3                      |  |
| P           | M07-0137 | MHT  | 2/26/07  | appd                | H. SUNDY   | 12/11/97                              |   | type Product Customer Drawing |  |
| sheet       | revision | P  | P        | P                   | P          | P                                     | P |                               |  |
| index       | sheet    | 1  | 2        | 3                   | 4          | 5                                     | 6 |                               |  |



form: A3



FCJconnect.com

Copyright FCJ

1

2 3

4

5

6

A

B

C

D

A

B

C

D

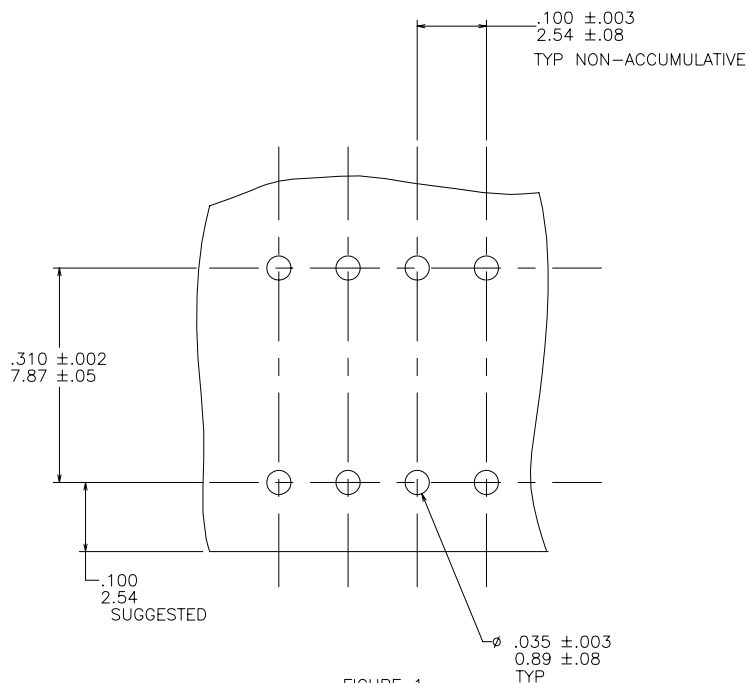


FIGURE 1  
SCALE 10/1

- NOTES:
- HOUSING MATERIAL.  
FILLED HIGH TEMPERATURE NYLON  
PER UL 94V-0  
COLOR: BLACK
  - TERMINAL MATERIAL.  
BODY: BRASS. .010/.25 THICK.  
SPRING: BE-CU. HEAT TREATED  
BODY PLATING:  
40 MICROINCH / 1.02 MICRON GOLD  
OVER 50 MICROINCH / 1.27 MICRON NICKEL IN CONTACT AREA.  
SOLDER TAIL: 100u"/2.54u" PURE TIN (MOTE 8) OVER 50u"/1.27 Ni.  
SPRING PLATING: GOLD FLASH
  - APPLICATION INFORMATION.  
A. RECOMMENDED MOUNTING HOLE PATTERN IS SHOWN IN FIG."1".  
B. ALL MATING PINS TO BE .025/.64 SQUARE ON TRUE CENTER OF GIVEN TERMINAL SPACINGS WITHIN .015/.38 DIA.  
C. SUGGESTED MATING PIN LENGTH .350±.020/8.89±.51.
  - TERMINAL MATERIAL:  
BODY: BRASS. .010/.25 THICK.  
SPRING: BE-CU. HEAT TREATED  
BODY PLATING:  
40 MICROINCH / 1.02 MICRON GOLD  
OVER 50 MICROINCH / 1.27 MICRON NICKEL IN CONTACT AREA.  
SOLDER TAIL: GOLD FLASH OVER 50u"/1.27u Ni.1.27 Ni.  
SPRING PLATING: GOLD FLASH
  - ADD "LF" SUFFIX AT THE END OF PART NUMBER FOR LEAD FREE OPTION.
  - THESE PRODUCT MEETS EUROPEAN UNION DIRECTIVES AND OTHER COUNTRY REGULATIONS AS DESCRIBED IN GS-22-008
  - THIS PART WILL WITHSTAND EXPOSURE TO 260°C PEAK TEMPERATURE FOR 20 SECONDS IN A WAVE SOLDER, INFRA-RED OR VAPOR PHASE SOLDER PROCESS.
  - THIS PRODUCT HAS 100% TIN PLATING IN THE INTERFACE AND HAS NOT BEEN TESTED FOR WISKER GROWTH IN ALL INTERCONNECT REQUIREMENTS

|             |  |                |  |                        |  |                                       |  |                               |  |
|-------------|--|----------------|--|------------------------|--|---------------------------------------|--|-------------------------------|--|
| mat'l. code |  | surface        |  | tolerance              |  | projection                            |  | product family                |  |
| -           |  | ISO 1302 ✓     |  | ISO 406<br>ISO 1101    |  | ⊕                                     |  | CARD CONN                     |  |
| ltr         |  | ecn no dr      |  | date                   |  | tolerances unless otherwise specified |  | title                         |  |
| P           |  |                |  |                        |  | .xx±.01/.3                            |  | GUIDE PIN<br>CARD CONNECTOR   |  |
|             |  |                |  |                        |  | .xxx ±.005/.13                        |  | INCH/MM                       |  |
|             |  |                |  |                        |  | .xxx ±.0020/.051                      |  | scale 4:1                     |  |
|             |  |                |  | dr L. SANDERS 12/11/97 |  |                                       |  | dwg no sheet 2 of 6 size      |  |
|             |  |                |  | enr H. SUNDY 12/11/97  |  |                                       |  | 67477 A3                      |  |
|             |  |                |  | chr H. SUNDY 12/11/97  |  |                                       |  | type Product Customer Drawing |  |
|             |  |                |  | appd H. SUNDY 12/11/97 |  |                                       |  |                               |  |
| sheet index |  | revision sheet |  |                        |  |                                       |  |                               |  |

form: A3

1

2

3

4

5

6

| PRODUCT NO. | NO. OF POS. | DIM. A    | DIM. B       | INSULATION PLUG | LEAD FREE OPTION |
|-------------|-------------|-----------|--------------|-----------------|------------------|
| 67477-001   | 2X1         | .00/0     | .358/9.09    | NO              | NOTE 6,7         |
| -002        | 2X2         | .10/2.5   | .458/11.63   | NO              | UNASSIGNED       |
| -003        | 2X3         | .20/5.0   | .558/14.17   | NO              | OBSOLETE         |
| -004        | 2X4         | .30/7.6   | .658/16.71   | NO              | OBSOLETE         |
| -005        | 2X5         | .40/10.1  | .758/19.25   |                 | NOTE 5           |
| -006        | 2X6         | .50/12.7  | .858/21.79   |                 |                  |
| -007        | 2X7         | .60/15.2  | .958/24.33   |                 |                  |
| -008        | 2X8         | .70/17.7  | 1.058/26.87  |                 |                  |
| -009        | 2X9         | .80/20.3  | 1.158/29.41  |                 |                  |
| -010        | 2X10        | .90/22.8  | 1.258/31.95  |                 |                  |
| -011        | 2X11        | 1.00/25.4 | 1.358/34.49  |                 |                  |
| -012        | 2X12        | 1.10/27.9 | 1.458/37.03  |                 |                  |
| -013        | 2X13        | 1.20/30.4 | 1.558/39.57  |                 |                  |
| -014        | 2X14        | 1.30/33.0 | 1.658/42.11  |                 |                  |
| -015        | 2X15        | 1.40/35.5 | 1.758/44.65  |                 |                  |
| -016        | 2X16        | 1.50/38.1 | 1.858/47.19  |                 |                  |
| -017        | 2X17        | 1.60/40.6 | 1.958/49.73  |                 |                  |
| -018        | 2X18        | 1.70/43.1 | 2.058/52.27  |                 |                  |
| -019        | 2X19        | 1.80/45.7 | 2.158/54.81  |                 |                  |
| -020        | 2X20        | 1.90/48.2 | 2.258/57.35  |                 |                  |
| -021        | 2X21        | 2.00/50.8 | 2.358/59.89  |                 |                  |
| -022        | 2X22        | 2.10/53.3 | 2.458/62.43  |                 |                  |
| -023        | 2X23        | 2.20/55.8 | 2.558/64.97  |                 |                  |
| -024        | 2X24        | 2.30/58.4 | 2.658/67.51  |                 |                  |
| -025        | 2X25        | 2.40/60.9 | 2.758/70.05  |                 |                  |
| -026        | 2X26        | 2.50/63.5 | 2.858/72.59  |                 |                  |
| -027        | 2X27        | 2.60/66.0 | 2.958/75.13  |                 |                  |
| -028        | 2X28        | 2.70/68.5 | 3.058/77.67  |                 |                  |
| -029        | 2X29        | 2.80/71.1 | 3.158/80.21  |                 |                  |
| -030        | 2X30        | 2.90/73.6 | 3.258/82.75  |                 |                  |
| -031        | 2X31        | 3.00/76.2 | 3.358/85.29  |                 |                  |
| -032        | 2X32        | 3.10/78.7 | 3.458/87.83  |                 |                  |
| -033        | 2X33        | 3.20/81.2 | 3.558/90.37  |                 |                  |
| -034        | 2X34        | 3.30/83.8 | 3.658/92.91  |                 |                  |
| -035        | 2X35        | 3.40/86.3 | 3.758/95.45  |                 |                  |
| -036        | 2X36        | 3.50/88.9 | 3.858/97.99  |                 |                  |
| -037        | 2X37        | 3.60/91.4 | 3.958/100.53 |                 |                  |
| -038        | 2X38        | 3.70/93.9 | 4.058/103.07 |                 |                  |
| -039        | 2X39        | 3.80/96.5 | 4.158/105.61 |                 |                  |
| 67477-040   | 2X40        | 3.90/99.0 | 4.258/108.15 | NO              | NOTE 6,7         |



Copyright FCI

|             |  |                |  |           |  |                                       |  |                               |  |
|-------------|--|----------------|--|-----------|--|---------------------------------------|--|-------------------------------|--|
| mat'l. code |  | surface        |  | tolerance |  | projection                            |  | product family                |  |
| -           |  | ISO 1302 ✓     |  | ISO 406   |  | ⊕                                     |  | CARD CONN                     |  |
| ltr         |  | ecn no dr      |  | date      |  | tolerances unless otherwise specified |  | title                         |  |
| P           |  |                |  |           |  | .xx±.01/.3                            |  | GUIDE PIN                     |  |
|             |  |                |  |           |  | .xxx ±.005/.13                        |  | CARD CONNECTOR                |  |
|             |  |                |  |           |  | .xxx ±.0020/.051                      |  | scale 4:1                     |  |
|             |  |                |  |           |  | dr L. SANDERS 12/11/97                |  | dwg no                        |  |
|             |  |                |  |           |  | enr H. SUNDY 12/11/97                 |  | sheet 3 of 6 size             |  |
|             |  |                |  |           |  | chr H. SUNDY 12/11/97                 |  | 67477 A3                      |  |
|             |  |                |  |           |  | appd H. SUNDY 12/11/97                |  | type Product Customer Drawing |  |
| sheet index |  | revision sheet |  |           |  |                                       |  |                               |  |



| PRODUCT NO. | NO. OF POS. | DIM. A     | DIM. B       | INSULATION PLUG | LEAD FREE OPTION |
|-------------|-------------|------------|--------------|-----------------|------------------|
| 67477-041   | 2X41        | 4.00/101.6 | 4.358/110.69 | NO              | NOTE 6,7         |
| -042        | 2X42        | 4.10/104.1 | 4.458/113.23 |                 |                  |
| -043        | 2X43        | 4.20/106.6 | 4.558/115.77 |                 |                  |
| -044        | 2X44        | 4.30/109.2 | 4.658/118.31 |                 |                  |
| -045        | 2X45        | 4.40/111.7 | 4.758/120.85 |                 |                  |
| -046        | 2X46        | 4.50/114.3 | 4.858/123.39 |                 |                  |
| -047        | 2X47        | 4.60/116.8 | 4.958/125.93 |                 |                  |
| -048        | 2X48        | 4.70/119.3 | 5.058/128.47 |                 |                  |
| -049        | 2X49        | 4.80/121.9 | 5.158/131.01 |                 |                  |
| -050        | 2X50        | 4.90/124.4 | 5.258/133.55 |                 |                  |
| -051        | 2X51        | 5.00/127.0 | 5.358/136.09 |                 |                  |
| -052        | 2X52        | 5.10/129.5 | 5.458/138.63 |                 |                  |
| -053        | 2X53        | 5.20/132.0 | 5.558/141.17 |                 |                  |
| -054        | 2X54        | 5.30/134.6 | 5.658/143.71 |                 |                  |
| -055        | 2X55        | 5.40/137.1 | 5.758/146.25 |                 |                  |
| -056        | 2X56        | 5.50/139.7 | 5.858/148.79 |                 |                  |
| -057        | 2X57        | 5.60/142.2 | 5.958/151.33 |                 |                  |
| -058        | 2X58        | 5.70/144.7 | 6.058/153.87 |                 |                  |
| -059        | 2X59        | 5.80/147.3 | 6.158/156.41 |                 |                  |
| -060        | 2X60        | 5.90/149.8 | 6.258/158.95 |                 |                  |
| -061        | 2X61        | 6.00/152.4 | 6.358/161.49 |                 |                  |
| -062        | 2X62        | 6.10/154.9 | 6.458/164.03 |                 |                  |
| -063        | 2X63        | 6.20/157.4 | 6.558/166.57 |                 |                  |
| -064        | 2X64        | 6.30/160.0 | 6.658/169.11 |                 |                  |
| 67477-065   | 2X65        | 6.40/162.5 | 6.758/171.65 | NO              |                  |
| -066 THRU   |             |            |              |                 | NOTE 6,7         |
| -100        |             |            |              |                 |                  |

OBSOLETE



FCJconnect.com

Copyright FCJ

|             |                |            |    |                     |  |  |  |                               |  |
|-------------|----------------|------------|----|---------------------|--|--|--|-------------------------------|--|
| mat'l. code |                | surface    |    | tolerance           |  | projection   |  | product family                |  |
| -           |                | ISO 1302 ✓ |    | ISO 406<br>ISO 1101 |  |  |  | CARD CONN                     |  |
| ltr         | ecn            | no         | dr | date                |  | tolerances unless otherwise specified                                |  | title                         |  |
| P           |                |            |    |                     |  | angles linear .xx±.01/.3<br>.xxx ±.005/.13<br>0'±2' .xxx ±.0020/.051 |  | INCH/MM<br>scale 4:1          |  |
|             |                | dr         |    | L. SANDERS          |  | 12/11/97   |  | dwg no                        |  |
|             |                | enr        |    | H. SUNDY            |  | 12/11/97   |  | sheet 4 of 6 size             |  |
|             |                | chr        |    | H. SUNDY            |  | 12/11/97   |  | 67477 A3                      |  |
|             |                | appd       |    | H. SUNDY            |  | 12/11/97   |  | type Product Customer Drawing |  |
| sheet index | revision sheet |            |    |                     |  |  |  |                               |  |



form: A3

| PRODUCT NO. | NO. OF POS. | DIM. A    | DIM. B       | INSULATION PLUG | LEAD FREE OPTION |
|-------------|-------------|-----------|--------------|-----------------|------------------|
| 67477-501   | 2X1         | .00/0     | .358/9.09    | YES             | NOTE 6,7         |
| -502        | 2X2         | .10/2.5   | .458/11.63   | YES             |                  |
| -503        | 2X3         | .20/5.0   | .558/14.17   | YES             |                  |
| -504        | 2X4         | .30/7.6   | .658/16.71   | YES             |                  |
| -505        | 2X5         | .40/10.1  | .758/19.25   |                 |                  |
| -506        | 2X6         | .50/12.7  | .858/21.79   |                 |                  |
| -507        | 2X7         | .60/15.2  | .958/24.33   |                 |                  |
| -508        | 2X8         | .70/17.7  | 1.058/26.87  |                 |                  |
| -509        | 2X9         | .80/20.3  | 1.158/29.41  |                 |                  |
| -510        | 2X10        | .90/22.8  | 1.258/31.95  |                 |                  |
| -511        | 2X11        | 1.00/25.4 | 1.358/34.49  |                 |                  |
| -512        | 2X12        | 1.10/27.9 | 1.458/37.03  |                 |                  |
| -513        | 2X13        | 1.20/30.4 | 1.558/39.57  |                 |                  |
| -514        | 2X14        | 1.30/33.0 | 1.658/42.11  |                 |                  |
| -515        | 2X15        | 1.40/35.5 | 1.758/44.65  |                 |                  |
| -516        | 2X16        | 1.50/38.1 | 1.858/47.19  |                 |                  |
| -517        | 2X17        | 1.60/40.6 | 1.958/49.73  |                 |                  |
| -518        | 2X18        | 1.70/43.1 | 2.058/52.27  |                 |                  |
| -519        | 2X19        | 1.80/45.7 | 2.158/54.81  |                 |                  |
| -520        | 2X20        | 1.90/48.2 | 2.258/57.35  |                 |                  |
| -521        | 2X21        | 2.00/50.8 | 2.358/59.89  |                 |                  |
| -522        | 2X22        | 2.10/53.3 | 2.458/62.43  |                 |                  |
| -523        | 2X23        | 2.20/55.8 | 2.558/64.97  |                 |                  |
| -524        | 2X24        | 2.30/58.4 | 2.658/67.51  |                 |                  |
| -525        | 2X25        | 2.40/60.9 | 2.758/70.05  |                 |                  |
| -526        | 2X26        | 2.50/63.5 | 2.858/72.59  |                 |                  |
| -527        | 2X27        | 2.60/66.0 | 2.958/75.13  |                 |                  |
| -528        | 2X28        | 2.70/68.5 | 3.058/77.67  |                 |                  |
| -529        | 2X29        | 2.80/71.1 | 3.158/80.21  |                 |                  |
| -530        | 2X30        | 2.90/73.6 | 3.258/82.75  |                 |                  |
| -531        | 2X31        | 3.00/76.2 | 3.358/85.29  |                 |                  |
| -532        | 2X32        | 3.10/78.7 | 3.458/87.83  |                 |                  |
| -533        | 2X33        | 3.20/81.2 | 3.558/90.37  |                 |                  |
| -534        | 2X34        | 3.30/83.8 | 3.658/92.91  |                 |                  |
| -535        | 2X35        | 3.40/86.3 | 3.758/95.45  |                 |                  |
| -536        | 2X36        | 3.50/88.9 | 3.858/97.99  |                 |                  |
| -537        | 2X37        | 3.60/91.4 | 3.958/100.53 |                 |                  |
| -538        | 2X38        | 3.70/93.9 | 4.058/103.07 |                 |                  |
| -539        | 2X39        | 3.80/96.5 | 4.158/105.61 |                 |                  |
| 67477-540   | 2X40        | 3.90/99.0 | 4.258/108.15 | YES             | NOTE 6,7         |

|             |                |            |    |                     |                                       |                  |              |                |                |                          |
|-------------|----------------|------------|----|---------------------|---------------------------------------|------------------|--------------|----------------|----------------|--------------------------|
| mat'l. code |                | surface    |    | tolerance           |                                       | projection       |              | product family |                |                          |
| -           |                | ISO 1302 ✓ |    | ISO 406<br>ISO 1101 |                                       |                  |              | CARD CONN      |                |                          |
| ltr         | ecn            | no         | dr | date                | tolerances unless otherwise specified |                  | title        |                |                |                          |
| P           |                |            |    |                     | angles                                | linear           | INCH/MM      |                | GUIDE PIN      |                          |
|             |                |            |    |                     | 0'±2'                                 | .xx±.01/.3       | scale 4:1    |                | CARD CONNECTOR |                          |
|             |                |            |    |                     |                                       | .xxx ±.005/.13   | dwg no       |                |                |                          |
|             |                |            |    |                     |                                       | .xxx ±.0020/.051 | sheet 5 of 6 |                | size           |                          |
|             |                |            |    |                     | dr                                    | L. SANDERS       | 12/11/97     | 67477          |                | A3                       |
|             |                |            |    |                     | enrg                                  | H. SUNDY         | 12/11/97     | FCI            |                |                          |
|             |                |            |    |                     | chr                                   | H. SUNDY         | 12/11/97     | type           |                | Product Customer Drawing |
|             |                |            |    |                     | appd                                  | H. SUNDY         | 12/11/97     |                |                |                          |
| sheet index | revision sheet |            |    |                     |                                       |                  |              |                |                |                          |



Copyright FCI

| PRODUCT NO. | NO. OF POS. | DIM. A     | DIM. B       | INSULATION PLUG | LEAD FREE OPTION |
|-------------|-------------|------------|--------------|-----------------|------------------|
| 67477-541   | 2X41        | 4.00/101.6 | 4.358/110.69 | YES             | NOTE 6,7         |
| -542        | 2X42        | 4.10/104.1 | 4.458/113.23 |                 |                  |
| -543        | 2X43        | 4.20/106.6 | 4.558/115.77 |                 |                  |
| -544        | 2X44        | 4.30/109.2 | 4.658/118.31 |                 |                  |
| -545        | 2X45        | 4.40/111.7 | 4.758/120.85 |                 |                  |
| -546        | 2X46        | 4.50/114.3 | 4.858/123.39 |                 |                  |
| -547        | 2X47        | 4.60/116.8 | 4.958/125.93 |                 |                  |
| -548        | 2X48        | 4.70/119.3 | 5.058/128.47 |                 |                  |
| -549        | 2X49        | 4.80/121.9 | 5.158/131.01 |                 |                  |
| -550        | 2X50        | 4.90/124.4 | 5.258/133.55 |                 |                  |
| -551        | 2X51        | 5.00/127.0 | 5.358/136.09 |                 |                  |
| -552        | 2X52        | 5.10/129.5 | 5.458/138.63 |                 |                  |
| -553        | 2X53        | 5.20/132.0 | 5.558/141.17 |                 |                  |
| -554        | 2X54        | 5.30/134.6 | 5.658/143.71 |                 |                  |
| -555        | 2X55        | 5.40/137.1 | 5.758/146.25 |                 |                  |
| -556        | 2X56        | 5.50/139.7 | 5.858/148.79 |                 |                  |
| -557        | 2X57        | 5.60/142.2 | 5.958/151.33 |                 |                  |
| -558        | 2X58        | 5.70/144.7 | 6.058/153.87 |                 |                  |
| -559        | 2X59        | 5.80/147.3 | 6.158/156.41 |                 |                  |
| -560        | 2X60        | 5.90/149.8 | 6.258/158.95 |                 |                  |
| -561        | 2X61        | 6.00/152.4 | 6.358/161.49 |                 |                  |
| -562        | 2X62        | 6.10/154.9 | 6.458/164.03 |                 |                  |
| -563        | 2X63        | 6.20/157.4 | 6.558/166.57 |                 |                  |
| -564        | 2X64        | 6.30/160.0 | 6.658/169.11 |                 |                  |
| 67477-565   | 2X65        | 6.40/162.5 | 6.758/171.65 | YES             |                  |
| -566 THRU   |             |            |              |                 | NOTE 6,7         |
| -600        |             |            |              |                 |                  |

OBSOLETE



FCJconnect.com

Copyright FCJ

|             |  |          |  |           |  |  |  |  |  |
|-------------|--|----------|--|-----------|--|--|--|--|--|
| mat'l. code |  | surface  |  | tolerance |  | projection                                       |  | product family   |  |
| -           |  | ISO 1302 |  | ISO 406   |  |  |  | CARD CONN  |  |
|             |  |          |  | ISO 1101  |  |  |  | title  |  |
| ltr         |  | ecn no   |  | date      |  | tolerances unless otherwise specified            |  | GUIDE PIN  |  |
| P           |  |          |  |           |  | .xx±.01/.3<br>.xxx ±.005/.13<br>.xxx ±.0020/.051 |  | CARD CONNECTOR   |  |
|             |  |          |  | 0'±2'     |  | INCH/MM  |  | scale 4:1  |  |
|             |  |          |  | dr        |  | L. SANDERS                                       |  | 12/11/97   |  |
|             |  |          |  | enr       |  | H. SUNDY   |  | 12/11/97   |  |
|             |  |          |  | chr       |  | H. SUNDY   |  | 12/11/97   |  |
|             |  |          |  | appd      |  | H. SUNDY   |  | 12/11/97   |  |
| sheet       |  | revision |  |           |  |  |  |  |  |
| index       |  | sheet    |  |           |  |  |  | dwg no 67477 sheet 6 of 6 size A3<br>type Product Customer Drawing |  |

form: A3